

# CERTIFICATE OF LOCATION OF GOVERNMENT CORNER

NORTHEAST Corner of Section 8, Township 107N, Range 39W

5th Principal Meridian, State of Minnesota, County of MURRAY

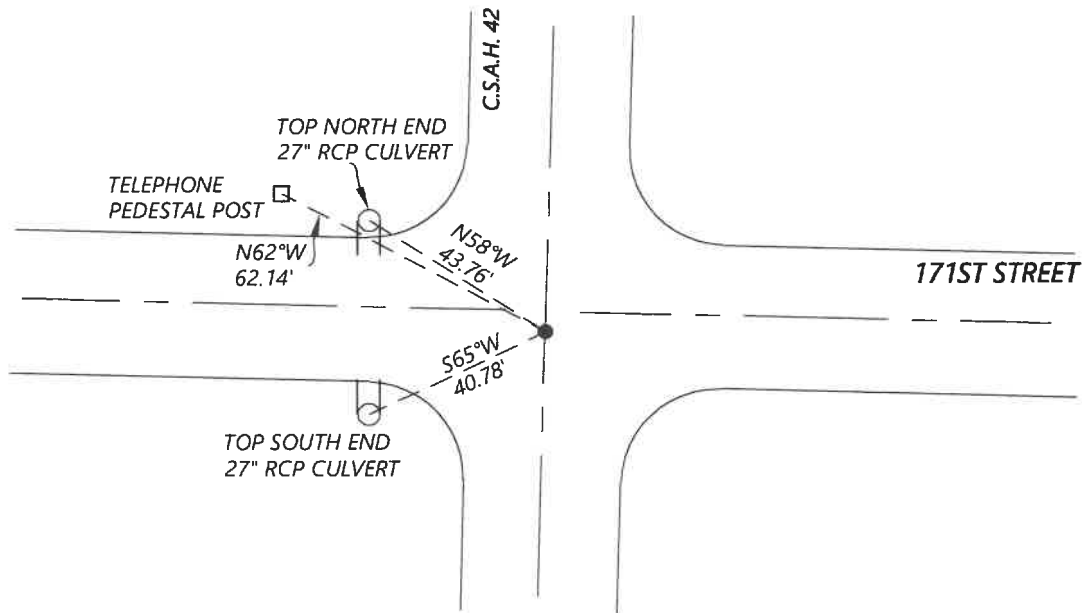
At the corner location shown on the sketch:

On 8/27/2020 found a NO. 4 REBAR WITHOUT CAP, FLUSH WITH ASPHALT  
DATE

left monument as found       lowered monument       removed monument (explain)

On \_\_\_\_\_ placed a \_\_\_\_\_  
DATE

### SKETCH OF REFERENCE TIES



N.T.S.

Statement of evidence for this corner location is on back of this page.

I hereby certify that this document was researched and prepared by me or under my direct supervision and that I am a licensed Land Surveyor under the laws of the State of Minnesota.

Signature [Handwritten Signature]

Date 6/16/2021 License No. 45874

Title:

- Land Surveyor       Professional Engineer
- County Surveyor       County Engineer

OFFICE OF THE COUNTY RECORDER

County of Murray

I hereby certify that this document was filed in the Co.

Recorder's office at \_\_\_\_\_ M. on the \_\_\_\_\_ day of \_\_\_\_\_ A.D. 20

County Recorder [Handwritten Signature: Karen Brom]

by JUN 22 2021, Deputy

DOCUMENT NO. \_\_\_\_\_

Statement of Evidence:

Northeast Corner of Section 8, Township 107 North, Range 39 West, 5th Principal Meridian, Murray County, Minnesota.

*No GLO Notes.*

1978 *April, Highway Department records show that they dug with a backhoe and found nothing.*

1991 *December, Corner certificate by LS #11943 shows that a  $\frac{5}{8}$ " iron was set with seal by existing evidence.*

1999 *May, CSAH 42 plans show the corner at PI station 4+837.470*

2000 *March, Highway Department records show that a  $\frac{3}{8}$ " rebar was placed at the corner with the following ties.*

<i>X in RCP Culvert</i>	<i>NW</i>	<i>43.75ft</i>
<i>X on Tele Ped</i>	<i>NW</i>	<i>62.38ft</i>
<i>Nail</i>	<i>W</i>	<i>155ft, 255ft. 349.95ft</i>

2017 *May, Highway Department records show that a No. 4 rebar was located with the coordinates:  
N: 189903.49 E: 558801.81*

2020 *September, Westwood Professional Services searched and found a No. 4 rebar and ties per 2000 Highway Department data. The coordinates fit with the 2017 Highway Department records. Did not recover any ties from 1991 corner certificate. I accepted the found monument and ties.*

Analysis of the recovered data, field evidence and survey measurements, indicates that the monument found is the correct perpetuation of this corner. For additional information concerning this corner please contact Westwood Professional Services.